

New accreditations – March/April



UK's premier artificial turf manufacturer recognises that as one of their partners,

In the Spring, Bradleys were awarded two fantastic accreditations – the first being an official TigerTurf Bronze Landscape Partner. With a network of installers throughout UK, this accreditation from Tiger Turf, the

Bradleys are highly qualified to give accurate advice and excellent customer service on a turf installation project.

Bradleys were also delighted to join the Constructiononline pre-qualification scheme. The scheme offers the UK's largest register for pre-qualified contractors and consultants and helps both public and private sector organisations source the best suppliers in terms of efficiency, best practice, time and cost-saving.

Pitch Maintenance Essential

Synthetic pitches may always look immaculate to the casual eye, but they require regular maintenance to stay at their best, according to Tom Bradley, of Bradleys Surfacing Systems. He's been involved in the industry since 2000, and after acquiring experience in the UK and overseas, he helped establish the family business. "We tell everyone we work with, these surfaces are low-maintenance, but they definitely are not 'no maintenance,'" admits Tom. "You need to prevent the pitch from 'compacting', it also needs to be cleaned, not simply swept. There's a process called 'drag-brushing' which helps, but for the best results, you also need to have them deep-cleaned and treated for moss and algae." Around 85% of the company's business comes from local authorities and schools, who after several years of austerity are eager to use sports pitches which can take much heavier use than grass. "The evolution which pitch manufacturers have brought to the industry has been remarkable," says Tom. "It's not just in the bases, or in the fibres, but in the way these surfaces drain. The latest generation of surfaces are also very easy to slide on." "The 3G pitches feature what we call 'low slide resistance', so players don't suffer abrasions or bruises if they tackle an opponent or fall. You can see why local authorities find them so appealing in terms of revenue. "If you install a pitch correctly and maintain it properly, you could generate as much as £160,000 a year by hiring it out, and the running costs are lower than a grass pitch. • Web: www.surfacingssystems.co.uk Email: info@surfacingssystems.co.uk Tel: 07810 222 499

FC Business coverage – March

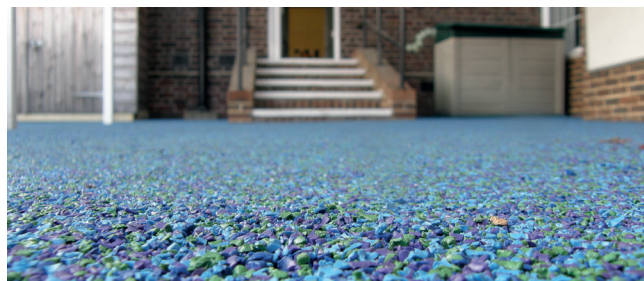
Bradleys were delighted to provide comment on the debate of 3G football synthetic surfaces in the March issue of FC Business. The feature highlighted how some of the biggest football clubs are having serious problems with the quality of their pitches and are looking to the option of synthetic surfaces to rectify this. Tom Bradley talked about the evolution of synthetic surfaces and the benefits that the latest generation can bring, but also highlighted that pitch maintenance is essential to keep synthetic surfaces looking their best.

Farncombe Infant & Nursery School – March

Bradleys re-visited Farncombe Infant & Nursery School in March to install an outside surface with wet-pour surfacing. Poor drainage caused issues for the area made it unusable at times so Bradleys designed a proposal to increase the drainage provision, installing ACO

drains and installing a porous 35mm thick wet-pour rubber surface with a multi-colour top layer. The area is now soft underfoot and has brightened up this corner of the school.

On completion of their second project, Ginny Burt, Business Manager of the school said "Bradley's returned in our Easter holiday to replace our old outside surface with 'wet-pour' surfacing. A very professional job – work completed on time and all of the staff very happy with the new area! It will mean our children can happily use the outside area throughout the summer term! Thank you!"



Welcome to the second edition of our newsletter, which aims to keep you up-to-date on all the latest news from Bradleys Surfacing Systems.

It's been an extremely busy year so far for the team and we've travelled far and wide throughout the country, carrying out direct and sub-contract installation and maintenance projects for a range of different educational and private establishments.

As well as working on a range of great installs, we're proud to have been awarded two fantastic accreditations so far this year – a TigerTurf UK Ltd Bronze Landscape Partner and a member of the Constructiononline pre-qualification scheme. In the first quarter of the year, we created a comprehensive mailer that aims to help headteachers and those involved in procurement in primary schools and nurseries make the right decisions in terms of their sports and play surfacing. The mailer

proved so popular that we recreated the idea for tennis clubs later in the year.

Most recently, we re-launched our new website, which details our service offering, as well as providing information of recent installations, testimonials and press coverage, demonstrating how far we've come since Bradleys was formed in 2012. Please do visit www.surfacingssystems.co.uk and let us know what you think!

Thanks again to you all for your continued support of Bradleys Surfacing Systems.

Tom Bradley



With offices in Birmingham and Lincolnshire, Bradleys Surfacing Systems are well located to serve the entire nation with a focus on the West and East Midlands, South West and East Anglia. We offer a consultation and design service at no up-front cost and are more than happy to discuss any potential projects in person.

Telephone 0121 794 3213 / 07810 222 499
Email info@surfacingssystems.co.uk
Website www.surfacingssystems.co.uk

St John the Baptist School – August

During the school summer holidays, Bradleys visited St John the Baptist School to carry out a project which involved the clearing of an otherwise unused courtyard in the school, levelled with a synthetic turf surface. The install also involved the construction of an amphitheatre style outdoor classroom, prayer garden and friendship benches. The team used specialist drainage solution, Permaplay to the lower section of the outdoor classroom to promote good drainage.



Synthetic Surface Specialists

Bradleys Surfacing Systems supply and install a range of synthetic sports, play and landscaping surfaces.

This ranges from simple artificial lawns for domestic properties to high specification surfaces for sports like tennis and football and safe rubber surfacing for playgrounds both in commercial and education settings. We also install rainwater harvesting systems which can offer people a sustainable way to use water at home and reduces water bills. We work UK wide and also maintain surfaces for clients. Tom Bradley, Director of Bradleys Surfacing Systems.

Can you tell me how Bradleys Surfacing came about?

After working in the industry for a number of years, my father, Ray and I wanted to offer something a little different to what was already on the market for the schools and sports clubs. We knew that our experience in both contracting and manufacturing gave us a unique offering and wanted to couple our expertise and experience with the level of customer service that a family owned and operated business can provide. In 2012, Bradleys Surfacing Systems was born!

What are the benefits of artificial surfacing in schools?

Artificial surfaces provides many benefits for schools:

- First and foremost safety is the main benefit, especially for the surrounds of play equipment.
- Performance synthetic surfaces offer far more consistency than most natural surfaces.
- Space is an ever more precious resource and synthetic surfaces can withstand more intensive usage, meaning they can be used for delivery in the curriculum, as well as general play time activities.
- Colour and creativity - surfaces can be installed in range of stimulating colours with interesting designs.
- The surfaces require less maintaining and therefore reduce the day-to-day school running costs.

Are there any safety aspects when thinking about artificial surfaces?

Yes, schools need to be mindful that they need to ensure that they are getting the right surface for the application. This can include the texture of the surface for grip and the right level of shock absorbency. For surfaces under equipment, the fall heights need to be considered and a surface designed appropriately.

And other schools you work with; what are they saying about you?

We have a great range of testimonials on our website from schools we have worked with throughout the country. They can be viewed at www.surfacingssystems.co.uk/testimonials

Thank you Tom for this insight, just before you go, where can I contact you for more information please?

Our website is the best place to contact us and find out information www.surfacingssystems.co.uk. Alternatively, schools can email: info@surfacingssystems.co.uk or call 07810 222 499.

The Educator coverage – June

For their June issue, *The Educator Magazine* approached Bradleys for an article on synthetic surfacing in schools. Within the Q&A piece, Tom explained the benefits of artificial surfacing in schools, including safety, consistency, colour and creativity and the reduced maintenance aspect.

Tom also offered advice to schools on the safety aspects they need to think about when choosing artificial surfacing, including the texture of the surface for grip, the right level of shock absorbency and fall heights.



Manor Farm Community Association – August

Bradleys were approached by Manor Farm Community Association to refurbish an existing unused tennis into a state of the art multi-games area in their grounds. The team used TigerTurf synthetic grass surface with a PVP shock pad for football, tennis, netball and hockey, on a new layer of macadam. The area now has 3 metre high rebound fencing and high quality floodlighting meaning that the surface can be played on at all times of the day.

Farm Walk Tennis Club – May

During the height of the tennis season, Bradleys went to London on behalf of ETC Sports to complete an installation at Farm Walk Tennis Club. The team installed Playrite’s ClayRite synthetic clay surface, the colour looked fantastic on completion.



Howe Bridge Sports Centre – July

During a very hot and humid couple of weeks in June, Bradleys were involved with the transformation of Howe Bridge Sports Centre in Atherton, Manchester. A project carried out on behalf of Midland CSB, the team installed ‘Domo’s Slide DS60/16’, for the use of football and rugby. The facility caters for a full size football pitch and three 7-a-side pitches, and has been tested to FIFA 1Star.



SHOCK PAD

playsafe 12 thickness 42mm critical fall height 120cm

top surface

1 x shock absorbing layer

PlaySafe
Application
Shock absorbing layer for play areas
Details
Playground safety surfacing product, tested to EN 1177 standards. With systems suitable for all ages and in a number of critical fall heights, this is an effective product to have installed under play equipment. Playsafe systems are completed with Matchwinner velour (please see below).
Manufacturer
Playrite, UK

SYNTHETIC SURFACES

Edén
Application
Landscape / play areas
Details
A unique, omni-directional™ synthetic turf product, creatively made to perfectly replicate natural grass. Edén's deflection of light and incorporation of moss and hazel colours in the thatch layer make this product extremely realistic. New for 2015, this product will show you just how much landscape turfs have improved - it's soft, dense and looks great.
Manufacturer
TigerTurf, UK

Best practice product mailer – April

As a specialist in synthetic surfacing, Bradleys created a product information sheet to help headteachers and those involved in procurement at primary schools and nurseries make the right decisions in terms of their sports and play surfacing. Bradleys searched the market for the best products in terms of quality and assurance and compiled a brief review so they can make an informed decision.

