

Farncombe C of E Infant School, Surrey

Synthetic turf surfacing for landscape outdoor play area Outdoor wet-pour playground surfacing

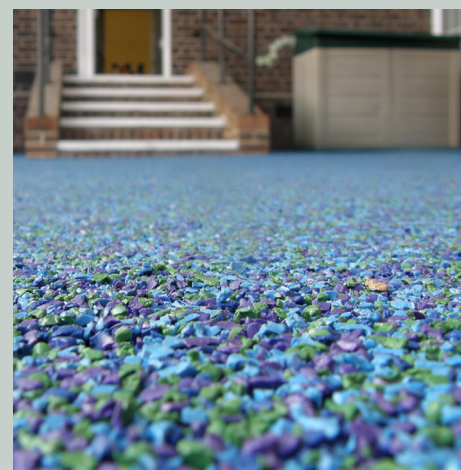
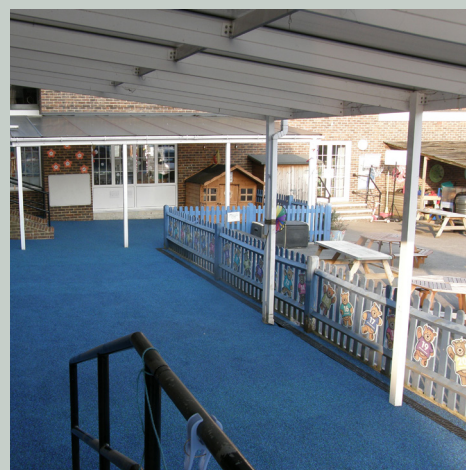
bradleys

SURFACING SYSTEMS

The outdoor play area at Farncombe Church of England Infant School was regularly water logged and with overgrowing trees, it received little sunlight, meaning the natural turf struggled to grow.

Bradleys Surfacing Systems was approached to transform an existing natural turf area into a synthetic turf surface. Due to poor onsite drainage, a new synthetic turf surface, Nordon's Thatch 23, was installed onto a grass area. The installation included a foam shock pad to ensure safety under the existing equipment and a river feature in blue synthetic turf under an existing bridge as part of the landscaping transformation.

Bradleys later re-visited Farncombe to install an outside surface with wet-pour surfacing. Poor drainage caused issues for the area and made it unusable at times, so Bradleys designed a proposal to increase the drainage provision, installing ACO drains and a porous 35mm thick wet-pour rubber surface with a multi-colour top layer. The transformed area is now soft underfoot and visually more impactful.



Client
Farncombe Church of England Infant School

Area
440m² synthetic turf
110m² wet pour rubber surfacing

Scope
Shock pad installation
Synthetic turf installation
Rubber wet pour installation
New drainage

For more information please contact us:

0121 794 3213

07810 222 499

info@surfacingystems.co.uk

www.surfacingystems.co.uk